



# the Hudson rEflexT or

Newsletter of the Southern California Chapter of the H-E-T Club

HMCC – 100 Years

HET Club – 50 Years

SC Chapter - 43 Years

July 2009

50<sup>th</sup> National Meet



July 13-17, 2009

## *Start Your Engines*

Staybridge Suites Detroit (888) 299-2208

Extended Stay Deluxe Detroit (248) 335-5200



This is the **BIG ONE**, the one that happens just once every 50 or 100 years, the one that you will tell your grandchildren about. So tune up the car, check the tires and give it a good waxing (bugs, rain, dust, etc.). We will see you in Pontiac.....

+++++

***Renew your SCC membership now!***

<http://socalhet.org>

## Upcoming SCC Events

- July 13 – 17, – HET 50<sup>th</sup> Anniversary  
Meet <http://hetclub.org>
- Aug 23 – Coastal Cruise to the  
Murphy Auto Museum
- September 17-19 – All California Meet  
*See flyer*
- Oct – Cruise to the Sky Meadow  
Ranch & Stagecoach Inn
- Nov 6-8 – Laughlin Economy Run  
starting at Ludlow
- Dec 6 – Christmas Party

-----  
Board Meetings are normally scheduled for 2 PM on the third Sunday of each month, and are **open to all members**. Phone 805/987-8187 for directions.

**Want an SCC Meet close to your home?** Just find a park or other attraction with parking and facilities. Then give Noah a call (626/799-6107)

## It's that time of the year

Summer time is that time to **renew** your **Chapter membership**. July 1<sup>st</sup> starts a new year for our Chapter and we need your support. **Local Chapter membership provides you with good friends, resource and parts information, a newsletter with the latest information, opportunities to enjoy your Hudson and a chapter web page.**

In order to avoid a dues increase this year because of the yearly postal rate increases, the Annual SCC Meeting decided to modify the Newsletter program. On months that there is no WTN, there will be a regular newsletter. On the months that the WTN is issued, SCC will email a pdf file to all members, so be sure that **we have your correct email address**.

And remember, the regular **SCC Newsletter** is now available by **email** as a pdf file. Many national magazines and

newspapers are going **digital** and Postal rates are scheduled to increase again. So, all **SCC Newsletters** are available by **email** as a pdf file. There are many benefits to the electronic version:

- Quick delivery
- Not postal damage
- Full color photos of the fine Automobiles
- Helps reduce increased postage and printing costs
- Able to receive it while traveling
- Able to print multiple copies
- Direct links to the internet

Just email your request to the editor: [HET@elkay.org](mailto:HET@elkay.org).

**If your mailing label shows 6-09**, it is time to renew for another year. A **renewal form** is included in this Newsletter for your updated SCC HET information. **Be sure to include a suggestion for future chapter activities.**

To get the next newsletter, just drop your renewal in the mail along with **\$15** dues to **Susan Ross**, Membership, by **Aug 1**. Help make this chapter worthy of the vehicles that we admire.

It is also important (and required) that you keep your **National membership** renewed since they provide the necessary **insurance** for the chapter.

## From the President's Garage

You'll be pleased to know our chapter is taking the lead in demonstrating the advantages of balanced budgets. To this end, we will be instituting a change in the newsletter publishing schedule. Henceforth, the newsletter will be mailed bi-monthly, with a e-mail version on alternate months to everybody who has

provided Bob Ross ([het@elkay.org](mailto:het@elkay.org)) with their email address.

Production & mailing costs suck up nearly all fifteen of our annual dues dollars. This leaves no money for our website (<http://socalhet.org/>) or other activities such as the annual picnic. We aim to cut this expense nearly in half with the new publishing schedule. You can take the savings even farther by electing to receive 'the **Hudson rElector**' newsletter electronically. With about 50 families on our roster, one can appreciate the potential savings. I have been receiving my copy electronically for most of a year. And this will help us defer dues increases (gotta love that).

So when you see the GEICO critters (not the cavemen), think of all the money your chapter would save if you were receiving the newsletter via the internet!  
*Jon Cronk*

## The California Automobile Museum

With 150+ vehicles nicely exhibited, the Sacramento museum, formerly known as the Towe Auto Museum, has four of America's finest: a **1933 Hudson Essex Terraplane**; a **1940 Hudson DeLuxe Six**; a **1956 Hudson Metropolitan**; and a **1929 Hudson Super Six Roadster**.

The '33 Essex 5 Window Coupe is a long wheelbase with a 6 cylinder engine. It has a unique Griffith offered for only one year. The car is owned by Mike & Ann Evans.



The **1940 Hudson DeLuxe Six** was donated by Dennis Flint. Dennis, an



HET member, is a museum volunteer and teaches a Hudson history class there.



This car featured an early application of an anti-roll bar which interlinked both front wheels. That year there were 7 series on 3 wheelbases.

The **1956 Metropolitan Coupe** was donated by William Morris and those



models were available in 4 body colors.

The **1929 Hudson Super Six Roadster** has a body by Briggs Co. and is owned by George Sherman.



The museum is easy to find, has plenty of free parking and very knowledgeable tour guides, so be sure to stop by when you are in the area.

<http://www.toweautomuseum.org/>

## A '29 Starter Modification

*by Steve Bonds*

Owners of early Hudsons are probably familiar with the difficulty you can have when trying to start cars with starter switches, rather than solenoids -- especially 6 volt cars. I've had a few 29s, and had always meant to try a solenoid modification, but only just got around to it last week. The difference was so amazing; I thought I would share the modification with any early Hudson owners who might be able to use it.

Below is what to do with a 29 -- it would probably work on other early cars with some modification depending on the starter set up.

### What you need:

- 1 Ford style 6 volt starter solenoid (12 volt if you converted). **MUST** be the type with ungrounded mount!
- 1 heavy duty battery cable (8 inches or so) with eye ends on both ends.
- 1 push-button starter switch.
- 1 three foot length of 14 gauge wire with spade or eye terminals on both ends.
- 1 shorter (you need to determine length) piece of wire with spade or eye terminals on both ends.

### What to do:

- Disconnect the battery.
- Disconnect the battery cable and all other electrical connections from the terminal tab on the starter mounting plate.
- Disconnect the strap connection that connects to the terminal on the starter, then push it back toward the engine to give clear access to the terminal.
- Attach the solenoid mounting tab to the terminal tab on the starter mounting plate.
- Attach the battery cable and other electrical connections that were on the terminal tab to the "Batt" side of the solenoid.
- Connect the new cable from the starter side of the solenoid to the terminal on the starter.

- Find an appropriate place under the dash to mount the push button switch.
- Connect the 3 foot 14 gauge wire from the switch under the dash to the actuator terminal on the solenoid. (can be fed through the firewall with other wire in the loom)
- Connect the shorter wire to the second terminal on the switch, then connect the other end to a suitable ground.
- Reconnect the battery.

Installation complete! There is no need to remove any of the original equipment from the car, and the solenoid is almost completely hidden by the frame rail.

To start: you will now need to modify one thing when you start the car. First, turn on the key, then push the starter foot pedal as you normally would, then push the starter button under the dash. You've never heard a 29 starter roll over this fast on 6 volts!

I did this to my car, and hot or cold, it starts almost instantly!

---

### Hudson Related Items for Sale

- <http://socalhet.org/salesroom.htm>

### Restoration Resources & Suppliers

- <http://socalhet.org/suppliers.htm>

---

### SCC Officers

**President:** Jon Cronk 805/987-8187

**Vice President:** Stephen Marshall 661-946-9027

**Secretary:** Brad Forbush 818/840-8979

**Treasurer:** Ruth Hay 818/247-0753

**Tour Chairman:** Noah Blough 626/799-6107

**Communications:** Bob Ross 626/355-8747

**Membership:** Susan Ross 626/355-8747

**Club Store Manager:** Jon Cronk 805/987-8187

**Region Director:** Craig Kistler 714/256-2558

**HET President:** Mike Cherry 435/657-0443

---



# Hudson Essex Terraplane Club, Inc.

## SOUTHERN CALIFORNIA CHAPTER MEMBERSHIP RENEWAL

Name \_\_\_\_\_ Spouse \_\_\_\_\_

Email Address \_\_\_\_\_ Phone \_\_\_\_\_

Street Address \_\_\_\_\_

City \_\_\_\_\_ State \_\_\_\_\_ ZIP \_\_\_\_\_

Electronic Newsletter (pdf) preferred \_\_\_\_\_ Yes \_\_\_\_\_ No

HET Membership No. \_\_\_\_\_ (Found on the WTN Label)  
*(National HET membership is required for local chapter membership)*

### Hudson-built cars owned:

| Year | Make | Model | Body Style | # of Cyl. | Condition |
|------|------|-------|------------|-----------|-----------|
|------|------|-------|------------|-----------|-----------|

\_\_\_\_\_

LIST ADDITIONAL CARS ON SEPARATE SHEET OF PAPER

**\$15 - MAKE CHECKS OR MONEY ORDERS PAYABLE TO "So. Cal. HET. Club"  
AND MAIL TO:**

Membership Chairman, 150 South Michillinda Avenue, Sierra Madre, CA 91024

### SCC ACTIVITY SURVEY

**What Types Of Chapter Activities Do You Enjoy Most And Are Most Important For You?**

\_\_\_\_\_

\_\_\_\_\_

**Suggestions for Future Chapter Activities and Events:**

\_\_\_\_\_

\_\_\_\_\_

**What Things Make It Difficult For You To Participate In Chapter Activities?**

\_\_\_\_\_

\_\_\_\_\_

**2009 ALL-CALIFORNIA MEET REGISTRATION FORM**

Name \_\_\_\_\_  
 Address \_\_\_\_\_  
 City \_\_\_\_\_ State & ZIP \_\_\_\_\_

Tel. #(s) \_\_\_\_\_  
 EMail \_\_\_\_\_

Will you need swap meet space? Y: \_\_\_\_\_ N: \_\_\_\_\_  
 Will you be bringing a Hudson product (drive or trailer)?

Registration is: \$10 per family \_\_\_\_\_  
 Banquet @ \$35/ plate(includes tip & tax) Pr. Rib \_\_\_\_\_/Salmon \_\_\_\_\_  
 Total \$ \_\_\_\_\_

Send check & form to: NorCal HET Club/ James Wood, Treasurer  
 1709 Berkeley Way #C  
 Berkeley, CA 94703

**For Questions please call Gary Fowler: 408-370-2999, or Ed Drezler: 415-673-2084**

Call San Simeon Lodge directly to make motel reservations at 866-990-8990  
 Special Room Rates good until Aug. 17, 2009. Mention "Hudson Club" when calling.

**HUDSON**



All-California Hudson Meet  
 September 17, 18, & 19  
 2009  
 San Simeon Lodge  
 9320 Castillo Drive  
 San Simeon, CA  
 866-990-8990



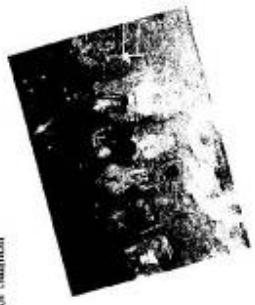
Which way to San Simeon?

Hot Dogs! Camp Fire Tales! Antiquing, Sight-seeing, Quilting, and best of all.....Tire Kicking!!  
 Wondering what to do with all your free time after the National Meet?  
 The San Simeon Lodge is located on the California Coast between Santa Barbara and Monterey.  
 From either the North or the South, the drive in is spectacular. Slightly north of The Lodge is Hearst Castle, one of the wonders of the modern world. Directly south is the quaint village of Cambria. Cambria is a major art center as well as offering a diverse assortment of quilt shops, fabric boutiques, exceptional restaurants of all types, and antique shops galore!! Added to these attractions is the fact that the San Simeon Lodge is very car-friendly. We have a huge swap meet area which, besides cars and parts, hosts the Silly's hot dog feed on Friday and Saturday. After dark the area comes alive as Hudson Folks gather around the compite to continue the day's tire-kicking and catch up with old friends. Saturday night will be the banquet at the CavalierRestaurant, right on the ocean, then Sunday it's farewell to friends old & new until next year.

Rates (ask for "Hudson Club")  
 Twin beds \$35/night  
 Queen \$80/night  
 Ocean view Queen \$90/night  
 Banquet: \$ 35/ plate, Specify Prime Rib or Salmon



Left: Cambria  
 Right: Campfire Kids





*Hudson-Essex-Terraplane Club  
Southern California Chapter  
150 South Michillinda Avenue  
Sierra Madre, CA 91024*



**First Class**